



Preston Candover CE Primary School

Preston Candover, Basingstoke, RG25 2EE

Telephone: 01256 389278

Headteacher: Mrs. Simrit Otway

Preston Candover CE Primary School

Getting to School Guide

This pack was developed by a joint Parent and Governor Parking and Road Safety Committee, after consultation with parents, residents, the Parish Council and the Tennis Club to help us all get our children in to and out of school quickly and safely every day.

Background

In common with many rural schools, many pupils have to be driven to and from school.

Unfortunately, there is simply not enough parking around the school to accommodate all those parents who wish to drive their children to school themselves.

Current demand means we need about 100 spaces for all those who drive, but in fact we only have about 40 spaces directly available outside the school. Even including other parking areas that are slightly further away, we probably only have about 60 spaces available at any one time in the village.

There is therefore a great deal of congestion at school pick-up and drop-off times, which is exacerbating concerns parents already have over road safety at these times.

As parents, we really need to think about ways we can help make this situation better, perhaps by walking or cycling where possible, by lift sharing, or by using the school bus routes available.

Alternatives to Driving

Bus Routes

If you live within the school catchment area, but three miles or more away from school, you are entitled to a free bus service for your children to and from school.

You are also entitled to a free bus service if you live out of catchment and if you applied for your child to go to another school, but were offered a place for your child at this school.

Currently there are two bus routes, covering some of the areas surrounding the school.

We would encourage parents to make the fullest possible use of these buses.

If you feel you should be eligible for free school bus provision but have not received any details on the service recently, please contact the Admin team who will be happy to help you.

Car Sharing

We would encourage parents whose children are not eligible for bus routes, and who live near each other, to share lifts wherever possible.

Cycling

Cycling to school is, of course, another option for those who wish to and are able to.

Driveway sharing

If you have friends living in the village perhaps ask if you can have use of their drive way at pick up and drop off times.

Driving to School

If, having exhausted all the alternatives, you still need to drive to school there are a variety of places that parents may park, with some caveats.

We feel it would be helpful for parents to consider all the available parking areas, bearing in mind their own needs, and the needs of others, when choosing where to park each day.

Summary

Parking Area	Number of Spaces	Comments
Village Hall Car Park	7 + 1 disabled bay	Please leave for parents with babies and Pre-schoolers whenever possible. Keep Disabled Bay Clear.
Parking Bay	14	Please REVERSE INTO the spaces.
Stenbury Drive	c.10	Please keep local residents' driveways clear. Don't park too close to corner with main road.
On-Street Parking	c.15	See diagrams. Leave spaces. Don't block driveways.
Purefoy Arms	14	Best for morning parking. Cross road to walk through village on pavement.
Outside Church	4	Limited parking but good for those with older children. Cross Wield Road to pavement.

Here is our guide:

Village Hall Car Park



There are approximately 8 parking spaces here.

Parking Bay opposite School



There are approximately 14 parking spaces here.

As per the Highway Code, you must **REVERSE INTO** these spaces, enabling you then to drive out facing forwards. PLEASE DO NOT drive into these spaces 'front end in', as the rear end of your car (particularly of larger hatchbacks and 4x4s) can obstruct the view right down the road, creating a blind spot around Malmsmead and the start of the parking bay. This has caused some near misses in the past. Please reverse in to these parking spaces, to create clear visibility.

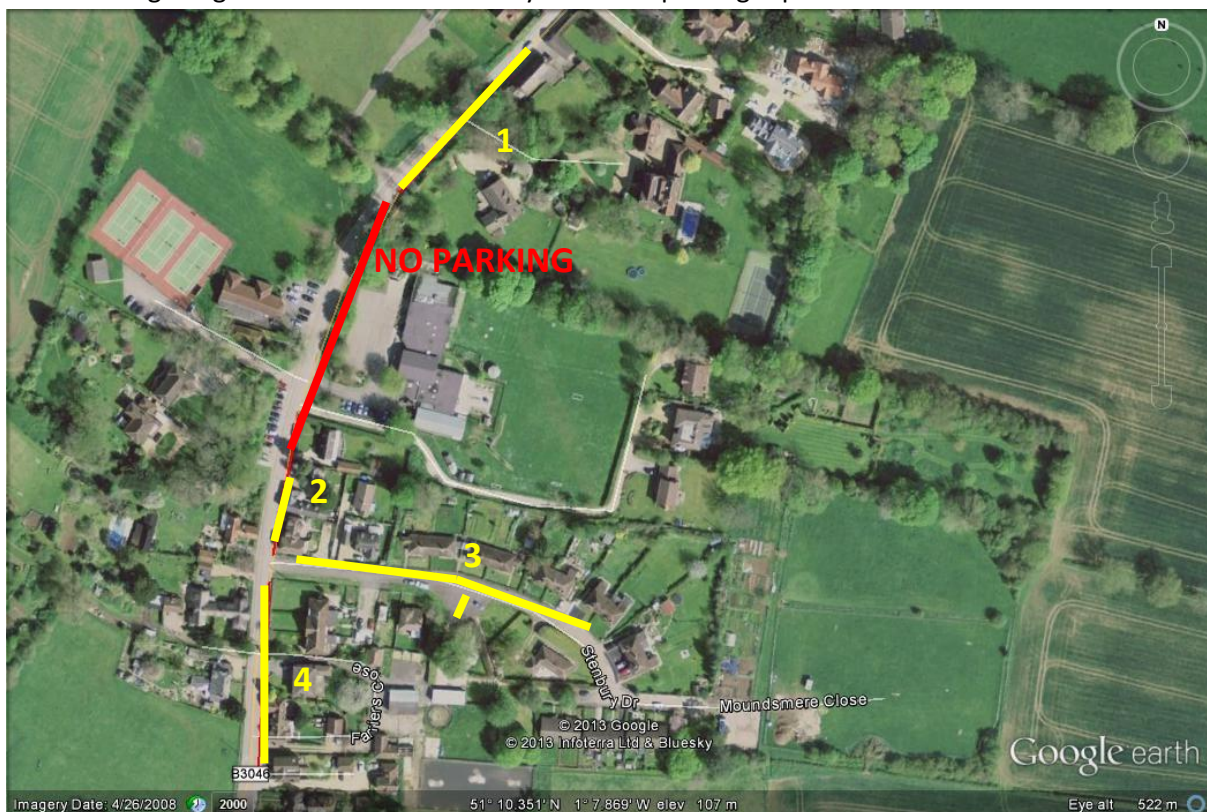
Summary: this parking bay can be used by anyone, but please remember to reverse INTO it.

On-Road Parking

PC Reid has confirmed that there are no permanent parking restrictions on the B3046 running through the village and it is possible for parents to park along that road, provided we park sensibly and leave spaces for passing vehicles to pull-in when confronted by oncoming traffic.

However, **PLEASE DO NOT PARK CLOSE TO THE SCHOOL BUSES OUTSIDE THE SCHOOL RAILINGS** (see red line on image below). This causes passing vehicles to drive for a long period of time on the wrong side of the road, round a bend, with very poor visibility. This creates an extremely dangerous situation for pedestrians crossing the road, and has been the cause of several near-accidents in the past.

The following images illustrate where exactly on-street parking is permitted:



1. North End of Village

This section of On-Street Parking begins at the large school patrol sign, and goes back to the entrance to close to Sumner House (40metres). Again, please leave spaces for vehicles to pull in if necessary, and do not block the driveway to Sumner House.



2. Middle of Village

There are about 60 metres of road here to park on, but please do not park opposite the Parking Bay



However, you are legally able to park here, (see below) with caution. Please do not park with your wheels on the pavement, and leave spaces for passing cars to pull in.



Stenbury Drive



This is a very under-used parking area, with about 60 metres available.

We suggest more parents actively consider parking here.

PC Reid has confirmed that parents are allowed to park on Stenbury Drive, and can then walk down the pavements to the school.

This is slightly further away from school (although, in many cases, not much further than the tennis court parking) but safer, as there is a pavement to walk on, and it removes the need to cross the any road.

As per the Highway Code, please do not park across resident's driveways, and do not park right on the corner to the main road.

3. South End of Village

There are about 70 metres from the end of Stenbury Drive to the Village Green.

As per the Highway Code, please do not park across resident's driveways, and do not park right on the corner to Stenbury Drive. Please leave gaps between cars to allow passing vehicles to pull in.

Please leave the way clear for pedestrians if parking in this particular spot.



Purefoy Arms Car Park



The Purefoy Arms' owners have kindly given us permission to use their parking space.

There are approximately 14 spaces here. This is potentially a better spot to use in the morning, as the car park is often busier in the afternoon with lunchtime customers.

You will need to cross the road to the opposite side to walk on pavements all the way to the school.

We suggest this is used in the morning, with care.

Outside the Church



There are about 3/4 spaces here.

As with the Purefoy car park you will need to cross the Wield Road to walk on pavements all the way to school. However, it is usually free both morning and afternoon.

Please do not park on the Wield Road side of the triangle, as it not really wide enough for two cars to pass.

Tennis Club Parking



The lane giving access to the Tennis Club is a **private drive**, with **no public right of way**.

THEREFORE, ONLY TENNIS CLUB MEMBERS, WHO ARE USING THE COURTS TO PLAY TENNIS MAY PARK HERE.

If you are a member parking here to use the tennis courts, the Tennis Club kindly requests that you **do not park on the grass either in front of the tennis club, or on the grass verges along the lane.**

Please do not park opposite the residents' driveways, nor use their driveway entrances as a turning circle.

Please also try to avoid parking up the centre of this space and blocking others in.